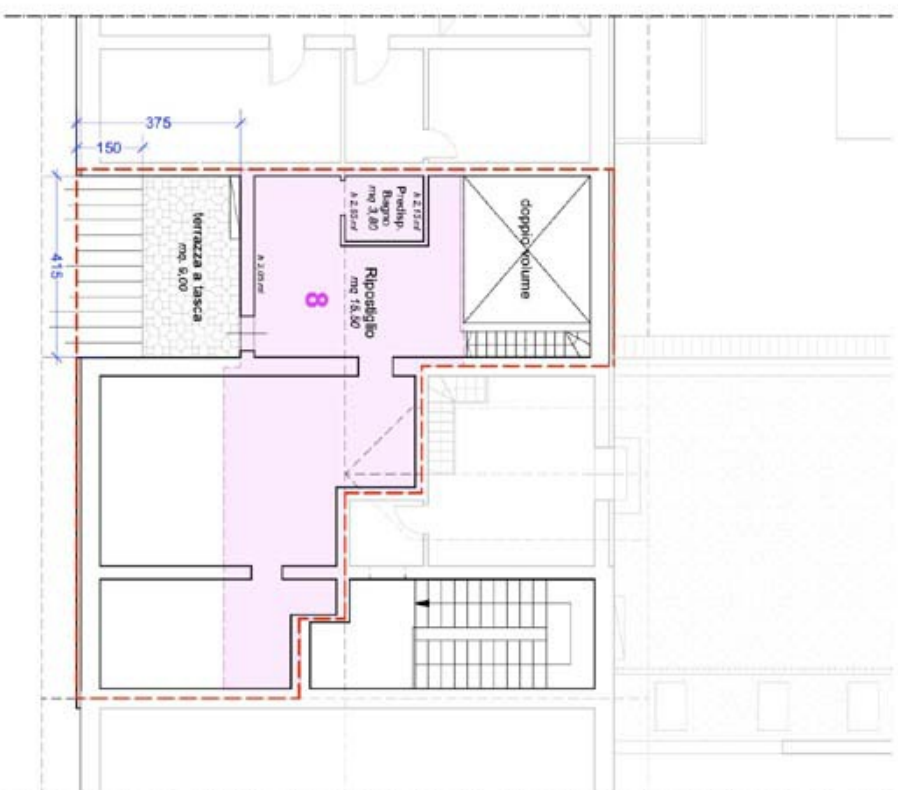
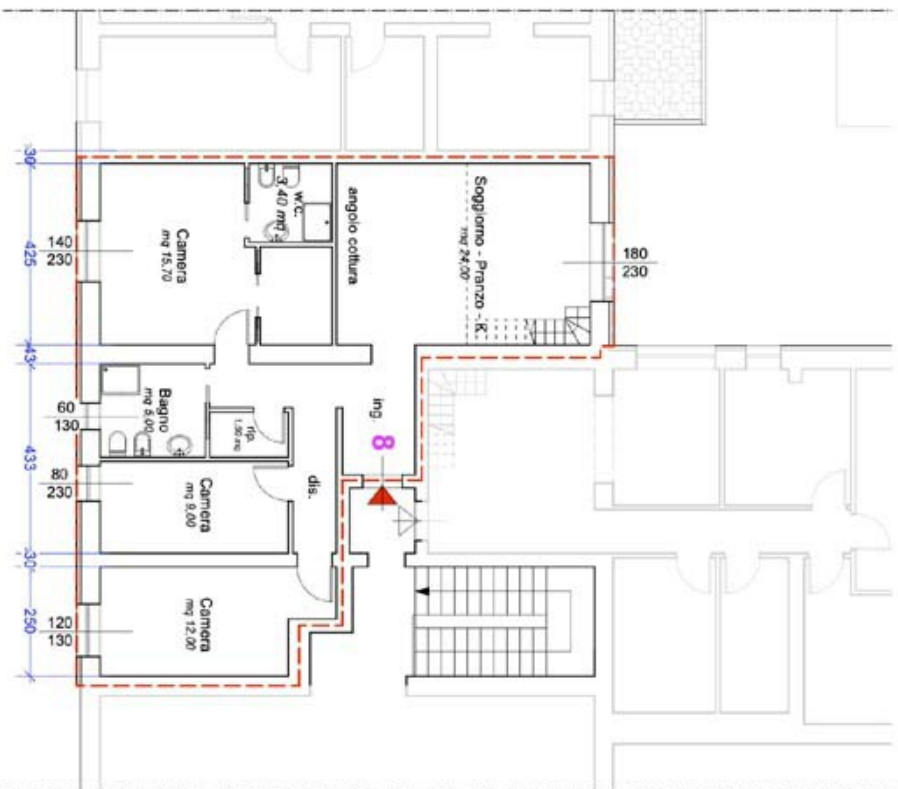


**APPARTAMENTO N. 8 - PIANO SECONDO / TERZO**  
**ABITAZIONE**



U.I.	Sup. F.T.	Canina	Soffitta	Sottotetto	Terr.	Pc	Pa	SC
	100%	50%	50%	10%	30%	50%	20%	
	m <sup>2</sup>	m <sup>2</sup>	m <sup>2</sup>	m <sup>2</sup>	m <sup>2</sup>	m <sup>2</sup>	m <sup>2</sup>	m <sup>2</sup>
<b>8</b>	<b>106,2</b>	<b>0,0</b>	<b>42,9</b>	<b>32,3</b>	<b>16,2</b>	<b>25,3</b>	<b>0,0</b>	<b>149,4</b>

**BALDI & ASSOCIATI**  
Ingegneri ed Architetti

**STUDIO BALDI & ASSOCIATI, INGEGNERIA E ARCHITETTURA**  
Ing. Franco Baldi - Ing. Alessandro Baldi - Arch. Mervi Ascanti  
Arch. Tommaso CapPELLI - Arch. Giulia Baldi

Via Europa 105 - 20129 quartale piave, tel 02 51 21 142 - 02 75 20 6155 - fax 02 72 91 110  
e-mail: tommaso@studiobaldibaldoni.com - francesca@studiobaldibaldoni.com - p.f. 01/902801579

PROGETTISTA

**Ing. ALESSANDRO BALDI**  
**Arch. TOMMASO CAPPELLI**

COMMITTENTE

**E di nardello**